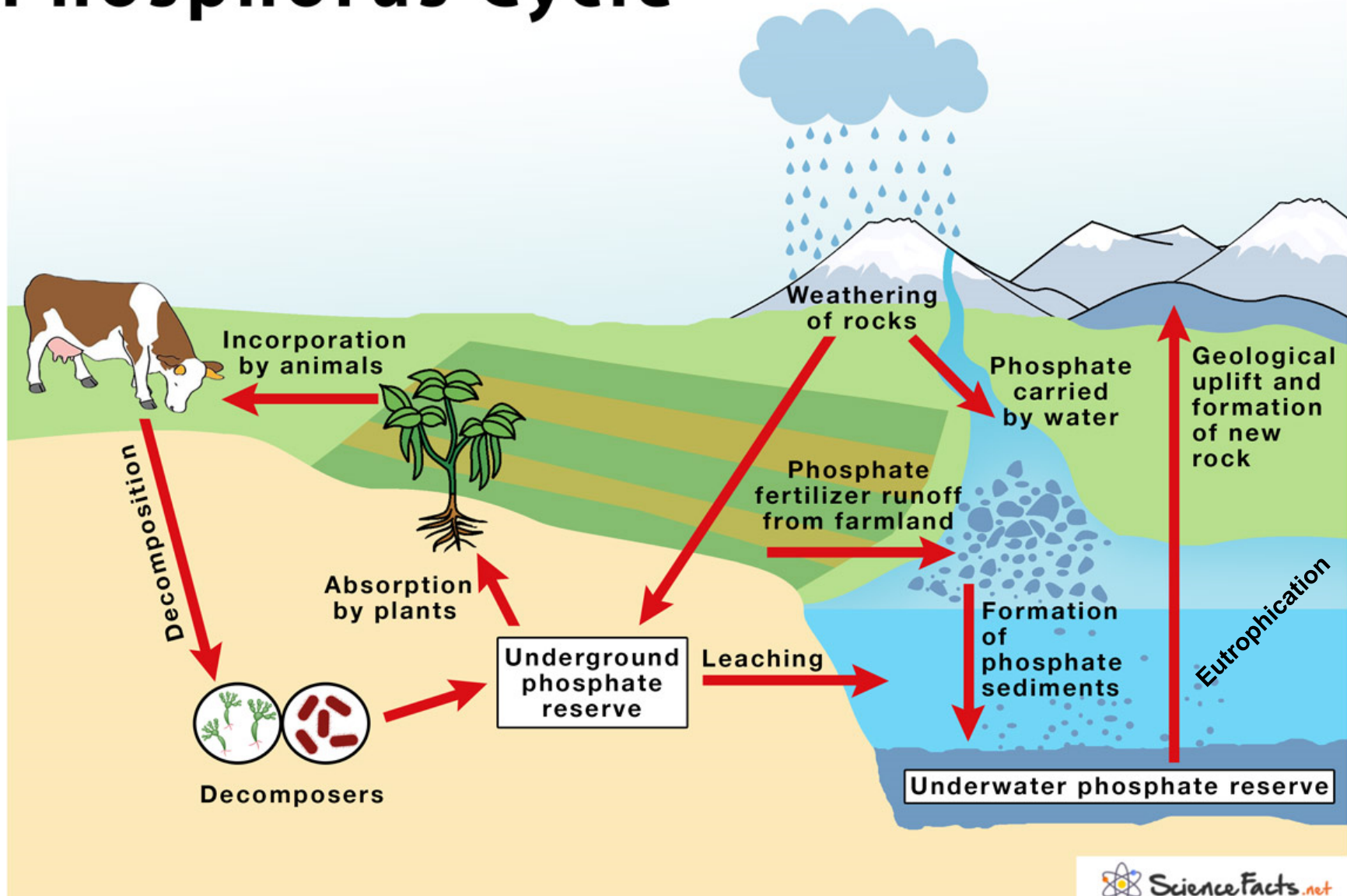
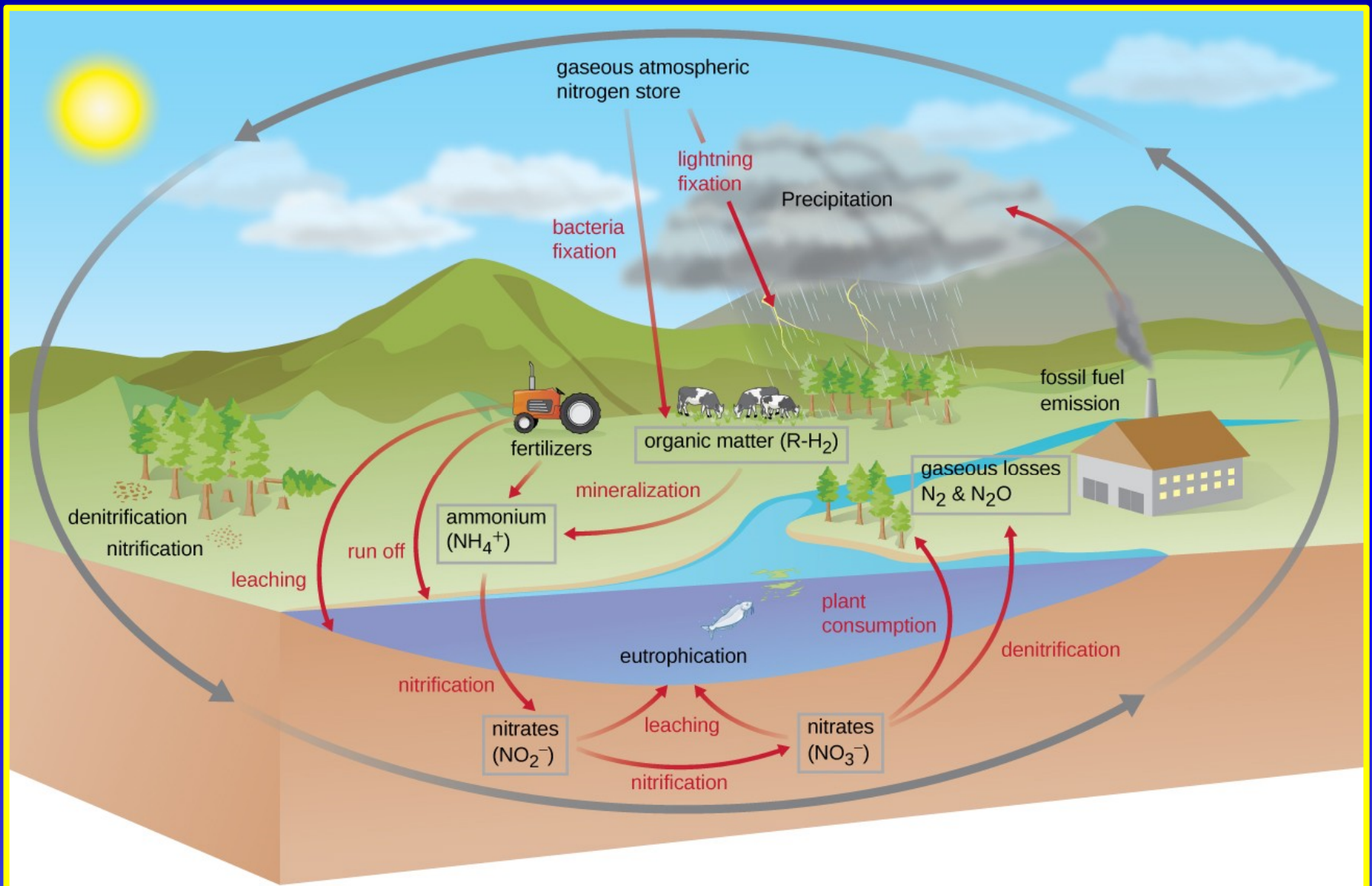




Phosphorus Cycle





Nitrogen cycle







Big Hollow Lake

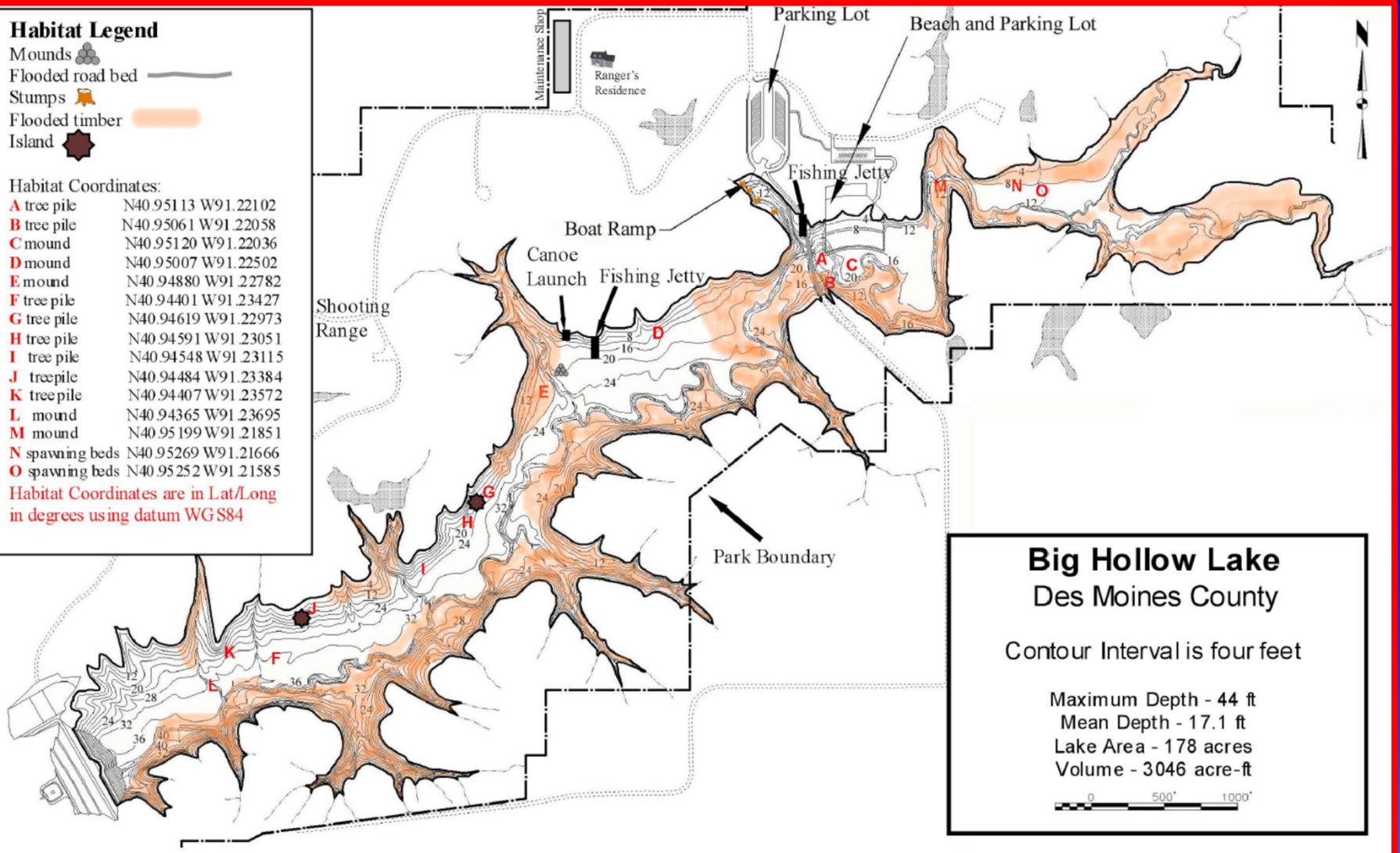
Habitat Legend

- Mounds 
- Flooded road bed 
- Stumps 
- Flooded timber 
- Island 

Habitat Coordinates:

- A tree pile N40.95113 W91.22102
- B tree pile N40.95061 W91.22058
- C mound N40.95120 W91.22036
- D mound N40.95007 W91.22502
- E mound N40.94880 W91.22782
- F tree pile N40.94401 W91.23427
- G tree pile N40.94619 W91.22973
- H tree pile N40.94591 W91.23051
- I tree pile N40.94548 W91.23115
- J tree pile N40.94484 W91.23384
- K tree pile N40.94407 W91.23572
- L mound N40.94365 W91.23695
- M mound N40.95199 W91.21851
- N spawning beds N40.95269 W91.21666
- O spawning beds N40.95252 W91.21585

Habitat Coordinates are in Lat/Long
in degrees using datum WG84



Big Hollow Lake Des Moines County

Contour Interval is four feet

Maximum Depth - 44 ft
Mean Depth - 17.1 ft
Lake Area - 178 acres
Volume - 3046 acre-ft





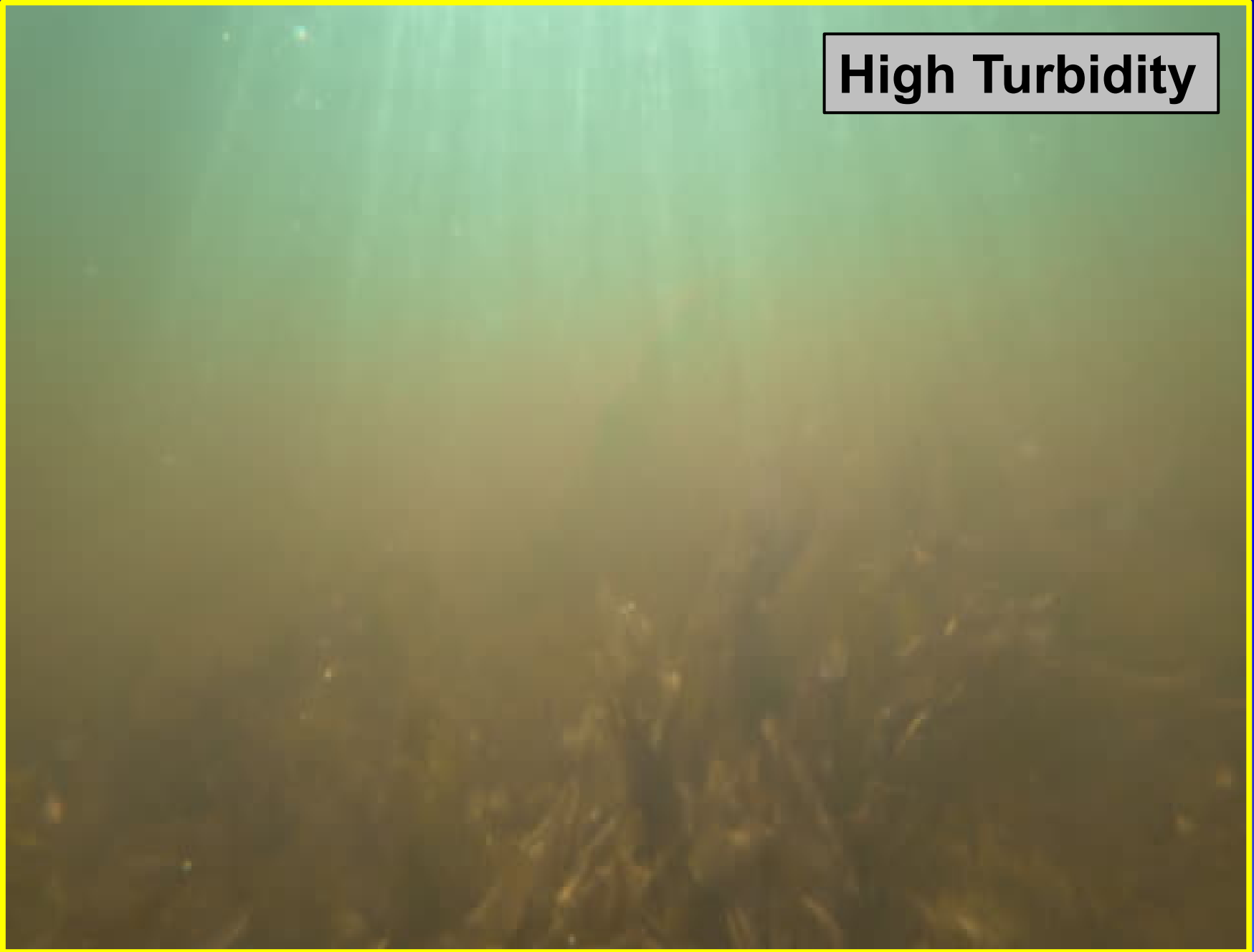


Sight-Feeding



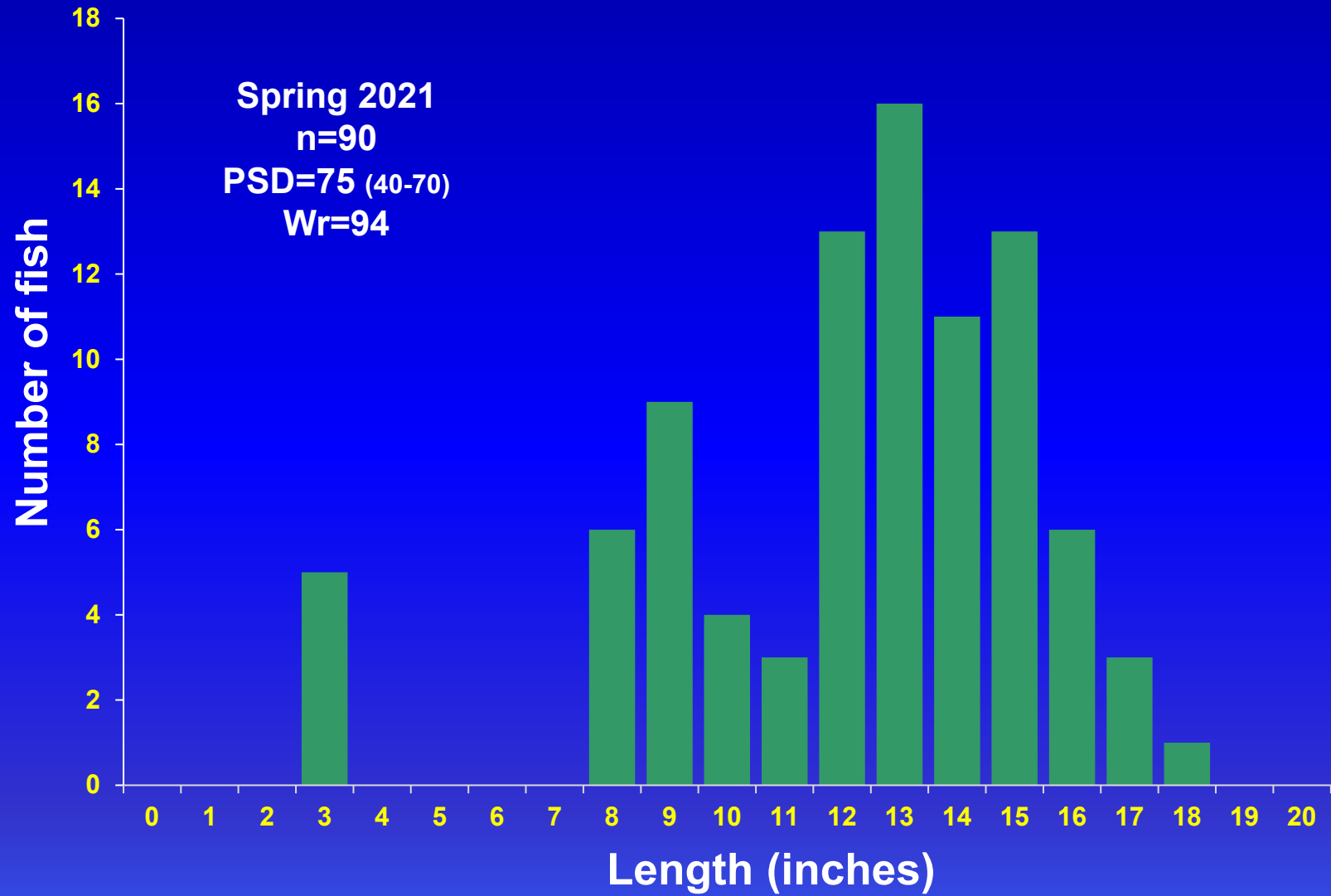
Excellent Water Clarity

High Turbidity

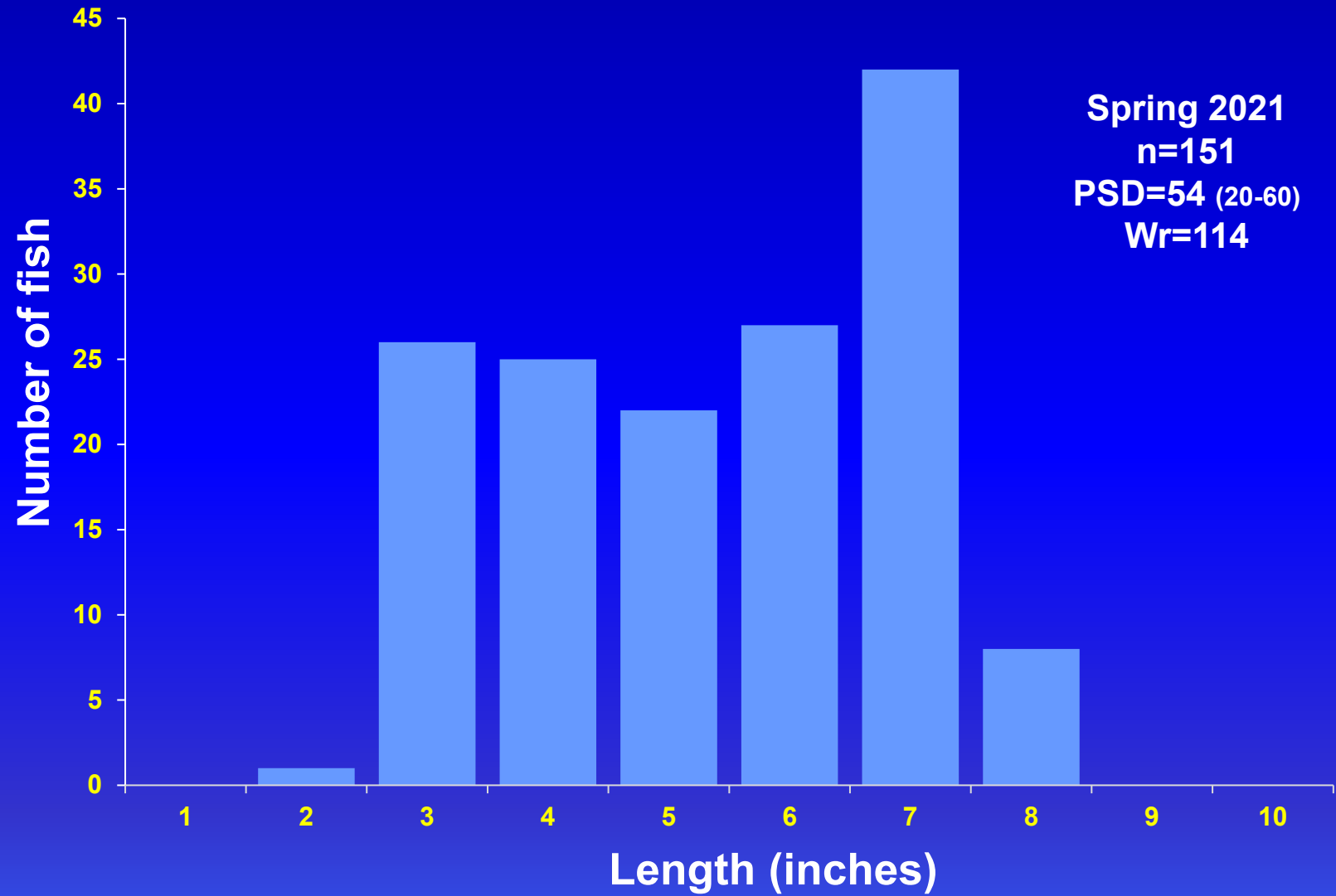




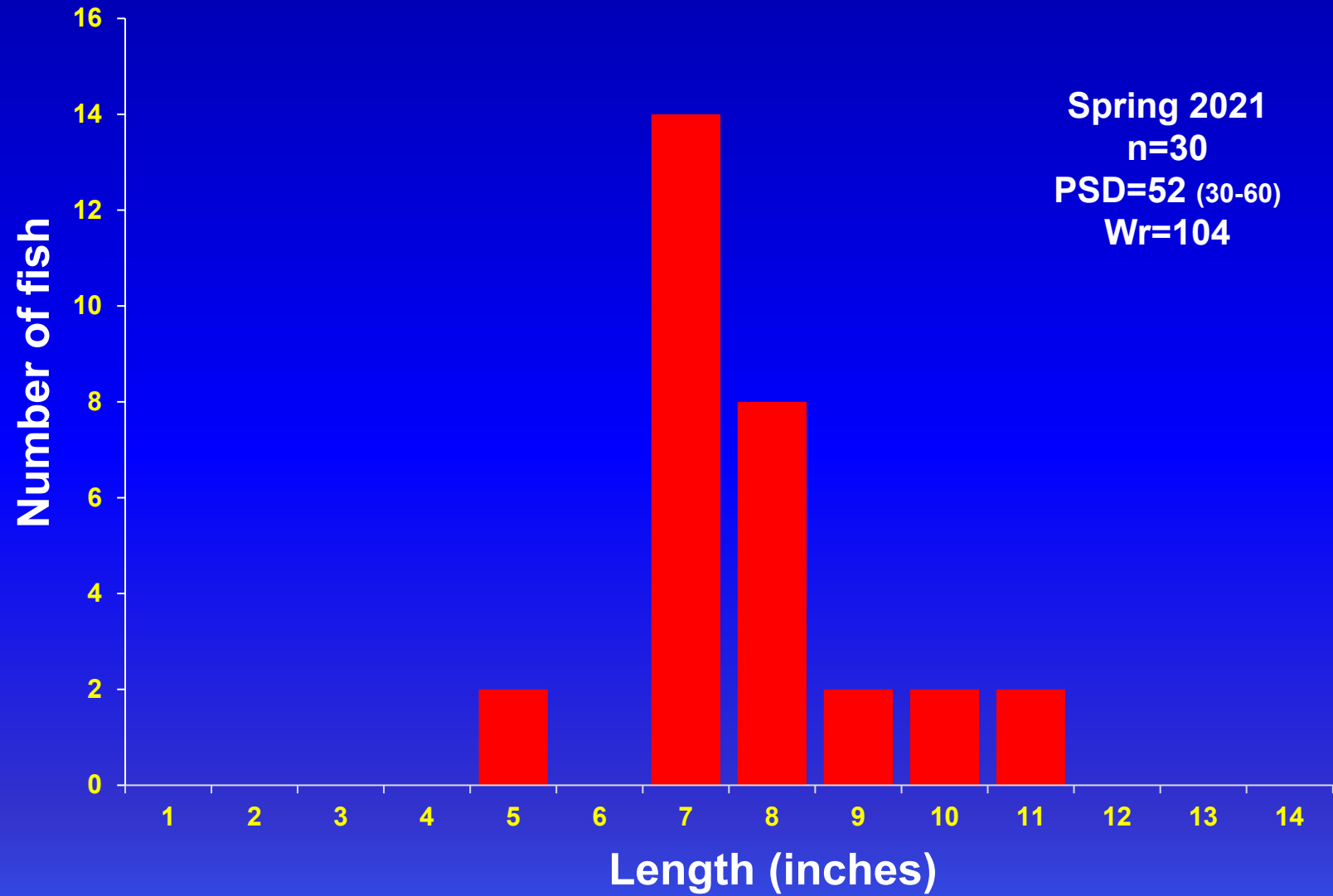
LARGEMOUTH BASS



BLUEGILL



BLACK CRAPPIE





Yellow Bass





QUESTIONS???